

OMEGA

LED Linear Moisture Proof Luminaire

CE IP65 LED RoHS eco*

5 YEAR WARRANTY
85% SAVING

NIXON provides a five year manufacturer's guarantee on all Nixon branded products.



Specifications

Body	: Aluminium
Housing	: Aluminium
Diffuser	: Transparent / Soft / Prismatic PC
Lens	: Mirrored Aluminium Base
Weight	: 1,85 kg (NIX-808ETJ02)
Power Source	: 100-240 V AC / 50-60 Hz
System Power	: 10W - 29W - 40W - 60W
Protection Class	: IP65
CCT (Kelvin)	: 4000K - 5000K - 6500K

- The combination of simple lines and gentle curves gives a modern touch with easy familiarity. It is designed to be adaptable to any space, adding greater value as a fixture of interior decoration.

Soft and compact design of Omega blend with application area perfectly. With click-in style installation features it can be mounted and hung to the ceiling easily or attached to the wall. It provides excellent performance by IP protection class that ensures maximum protection at dusty and humid spaces at production facilities which cause micro scaled dust and which are exposed to moisture.

Protection against dust and moisture designed to light industrial facilities and utility rooms such as production and warehouse spaces, parking lots, workshops, path ways.

Heat Generation



HID/Sodium : 100 C
LED : 35 C

Light Source Life



HID/Sodium : 15.000 Hrs
LED : 50.000 Hrs

Mercury Safety



HID/Sodium : Contains
LED : -

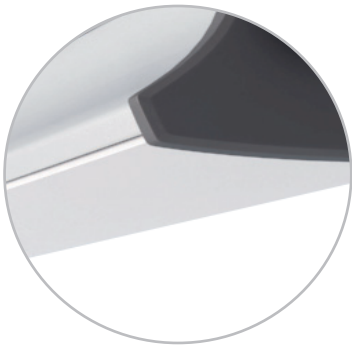
Equal With



T8 : 2X36 W

Applications

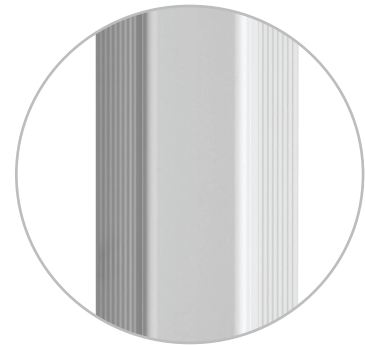
Textile Factory, Warehouse, car park, industrial low bay work areas



Super Soft Diffuser



Built - in Driver



Aluminium Body & Heat Sink

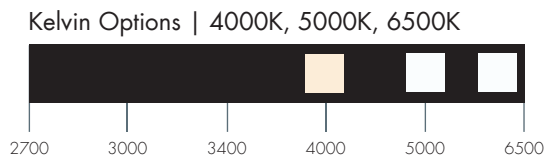


- Privo can be manufactured with diffuser options offering 3D effects as well.
- Low power consumption while high light efficiency, power consumption just 20% as much as high pressure sodium lamp, mercury lamp at the same luminous condition, it saves energy more than 75% than that traditional light.
- Die casting aluminum housing, with anti-static and anti-corrosion coating.
- Advanced quadratic light distribution design result in high uniformity of illumination and good lighting quality, clear lighting effect without a double image.
- Beautiful appearance, several types of installation methods available.

Omega series can be utilized together with emergency kits.

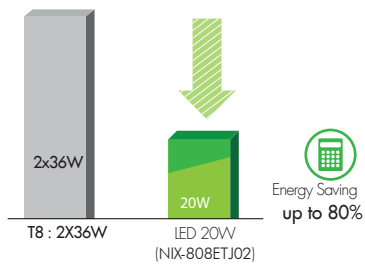
It can be ordered as custom lengths through various length options.
(Min 50 cm max 250 cm)

Omega can be connected flat linear style via special transparent connector without any lumen loss.



- Lightweight design
- Structure for easy installation
- Long life up to 50,000 hours

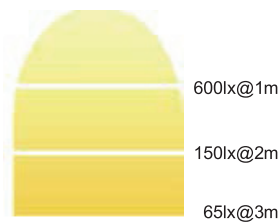
Go to nixonled.com for IES specific data and technical drawings.



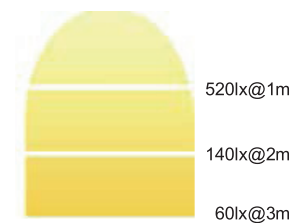
Go to nixonled.com for IES specific data and Light & lumen distribution graphics.

Light & Lumen Distribution Graphics

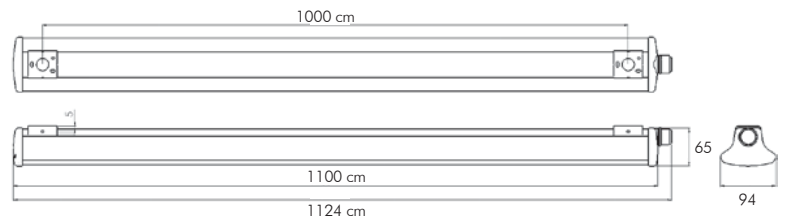
@ Flux : 1,600lm (6,500K / 5,000K)



@ Flux : 1,500lm (4,000K)



Dimensions & Drawings (NIX-808ETJ02)



Specifications

	NIX-808ETJ01	NIX-808ETJ02	NIX-808ETJ03	NIX-808ETJ04	NIX-808ETJ08
Power Consumption	10W	20W	29W	40W	60W
Input Voltage	220V AC (applied for 100-240V)				
Frequency	50/60 Hz (applied for 47-63 Hz)				
Ingress Protection	IP65				
Power Factor	>0.95				
Color Temperature(K)	Warm white:3000K; Pure white: 5000K				
CRI	Ra > 80				
Efficacy	110 lm/W				
Lifespan	up to 50000 Hours				
Material	99 % Pure Aluminum Alloy				
Dimensions	1000 x 65 x 94 mm (NIX-808ETJ02)				
Net Weight	1,85 kg (NIX-808ETJ02)				

Order Information

Article no	System Power	Lumen	Lenght (cm)
NIX-808ETJ01	10W	1200	50
NIX-808ETJ02	20W	2400	100
NIX-808ETJ03	29W	3600	150
NIX-808ETJ04	40W	5000	150
NIX-808ETJ05	20W	2400	50
NIX-808ETJ06	29W	3600	100
NIX-808ETJ07	20W	2400	150
NIX-808ETJ08	60W	7200	250