

TRINITY

LED Explosion Proof Light

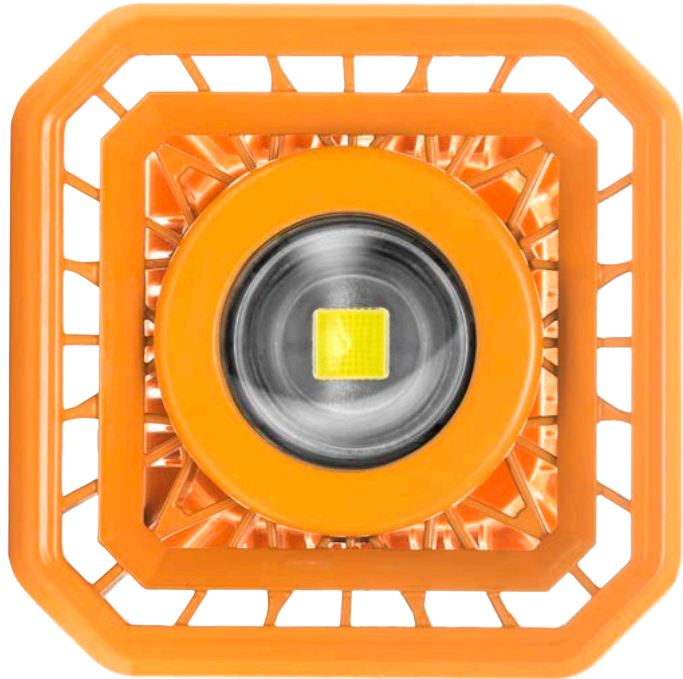
North American Classification

Class : 1	Gases
Division : 2	

EU Classification

Zone : I, II	Gases / Vapors
--------------	----------------

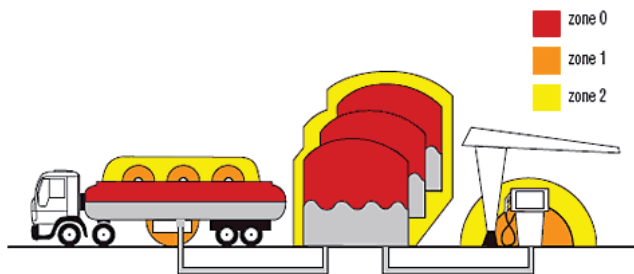
Ex mark : Ex d IIB T5; Ex t III C



NIXON provides a five year manufacturer's guarantee on all Nixon branded products.

- Electric Powered Industrial Equipment, used in areas containing explosive or flammable materials, must be designed to prevent any operation of the equipment from igniting the atmosphere. The design and construction of EX Lighting Equipments by NIXON permit their classification as Explosion Proof (EX) and enable their use in explosive and hazardous atmospheres.

(ATEX) ZONE DIAGRAM :



Heat Generation



HID/Sodium : 100 C
 LED : 35 C

Light Source Life



HID/Sodium : 15.000 Hrs
 LED : 50.000 Hrs

Mercury Safety



HID/Sodium : Contains
 LED : -

Equal With



HID : 100 W
 Sodium : 150 W

ATEX APPROVED

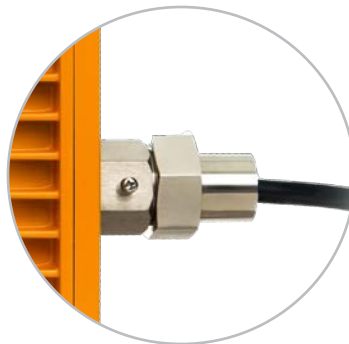
Certificate No:
NEMK012 ATEX 1254



Applied to oil fields, oil refineries, offshore oil platform, power plants, gas stations, oil tanks, wharf, tunnel, pumping station, substation, the military base etc. Zone I and Zone II Hazardous Locations, Zone 20, Zone 21, Zone 22 and II A, II B, II C explosive gas atmosphere.



Bullet-proof Lens

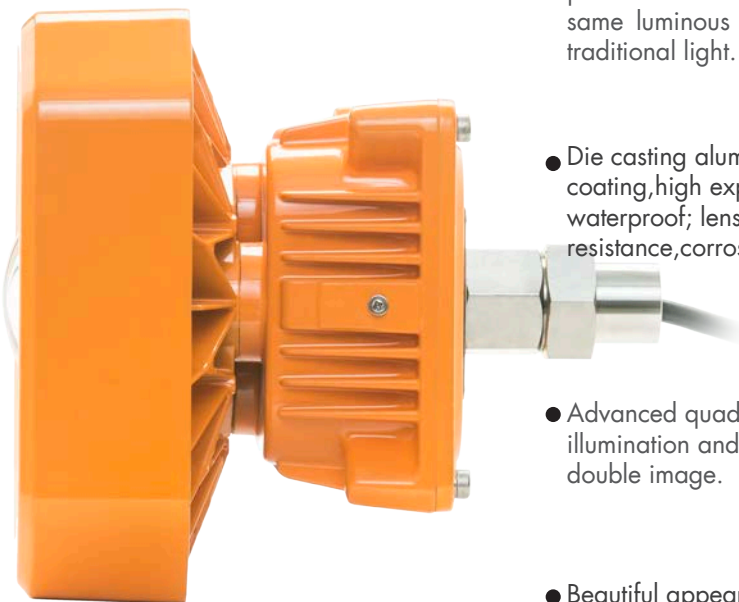


Fit for 1/2 NPT Glands



Applied with Hanging Bracket

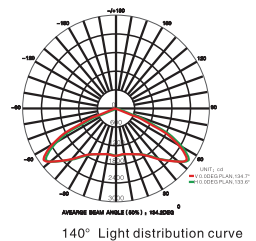
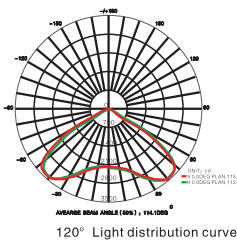
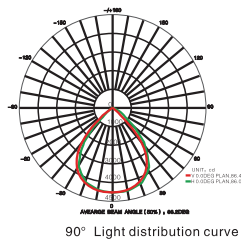
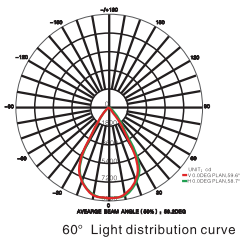
- Patented design for heat dissipation to ensure life of light source up to 50,000 hours.
- Low power consumption while high light efficiency, power consumption just 20% as much as high pressure sodium lamp, mercury lamp at the same luminous condition, it saves energy more than 75% than that traditional light.
- Die casting aluminum housing, with anti-static and anti-corrosion coating, high explosion-proof degree of flameproof type; dust-proof, waterproof; lens made of bulletproof PC which is thermal resistance, corrosion resistance, high light transmission.
- Advanced quadratic light distribution design result in high uniformity of illumination and good lighting quality, clear lighting effect without a double image.
- Beautiful appearance, several types of installation methods available.





- Advanced Quadratic Light Distribution
Dust-Proof, Waterproof, Bulletproof Lens
- Die Casting Aluminium Housing
- Several Type Montage Equipments
- Anti-Static, Anti-Corrosion Coating
- Can be Used as Ex-Proof Street Light with special frame

LIGHT DISTRIBUTION & ILLUMINANCE GRAPHICS :



HEIGHT (60° BEAM ANGLE)	Vertical illuminance (50/60/80/100/120W)	Irradiation range
8M	87/112/134/141/162Lx	Φ 10M
10M	56/72/86/92/104Lx	Φ 13M
12M	39/50/59/66/73Lx	Φ 16M
20M	14/18/21/23/26Lx	Φ 24M

The minimum lux at edge is 4 LX

HEIGHT (90° BEAM ANGLE)	Vertical illuminance (50/60/80/100/120W)	Irradiation range
8M	31/38/52/64/71Lx	Φ 20M
10M	20/24/34/41/46Lx	Φ 24M
12M	14/18/23/27/32Lx	Φ 24M
14M	10/13/17/21/23Lx	Φ 25M

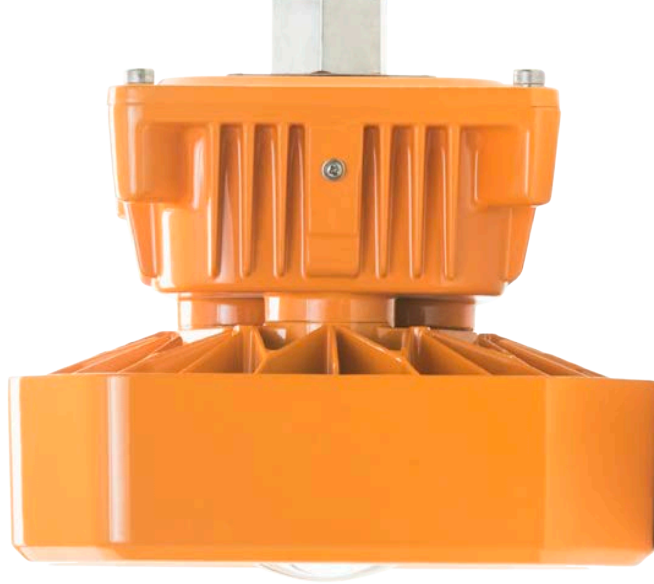
The minimum lux at edge is 4 LX

HEIGHT (120° BEAM ANGLE)	Vertical illuminance (50/60/80/100/120W)	Irradiation range
6M	30/32/43/52/61Lx	Φ 18~20M
8M	15/17/24/30/35Lx	Φ 21~24M
10M	10/11/15/20/23Lx	Φ 24~28M
12M	7/8/11/13/16Lx	Φ 28~32M

The minimum lux at edge is 4 LX

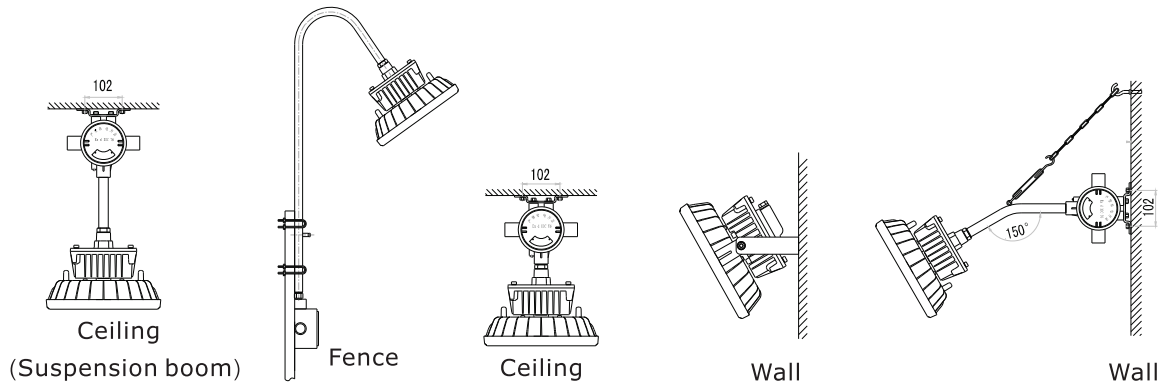
HEIGHT (140° BEAM ANGLE)	Vertical illuminance (50/60/80/100/120W)	Irradiation range
6M	20/23/31/38/44Lx	Φ 20~24M
8M	11/13/17/21/25Lx	Φ 24~28M
10M	7/8/11/13/16Lx	Φ 26~32M
12M	4/6/8/10/12Lx	Φ 30~36M

The minimum lux at edge is 4 LX



MONTAGE TYPES

Go to nixonled.com for IES specific data and technical drawings.



	NIX-EX-EPL05 20W	NIX-EX-EPL05 30W	NIX-EX-EPL05 40W	NIX-EX-EPL05 50W
Power Consumption	20W	30W	40W	50W
Input Voltage	220V AC (applied for 90-305V)			
Frequency	50/60 Hz (applied for 47-63 Hz)			
Beam Angle	60°/90°/120°/140° / 140° (Transversely) 70° (vertically)			
Explosion-proof Grade	Ex dIIB T6 Gb/Ext IIIC T80 °C Db			
Corrosion-proof Grade	WF2			
IP Grade	IP66			
Power Factor	>0.95			
Total Harmonic Current	<15%			
Lamp Efficiency(%)	≥90%			
Color Temperature(K)	Warm white:2700-4000K; Pure white: 5000-6500K			
Junction Temperature(Tj)	<65°C			
Color Rendering Index (CRI)	Ra > 70			
Light Effect	130 lm/W			
Ambient Environment	Temperature: -30°C—55°C; Humidity: 10-90%RH (25°C)			
Storage Temperature	-40°C-60°C			
Lifespan	>50000 Hours			
Material	Aluminum Alloy			
Installation Height	4~10m (flood light) / 10~30m (project light)			
Dimensions / Pkg. Size(mm)	-			
Net Weight / packed Weight	-			