

TENDO

LED Explosion Proof Emergency Light

North American Classification

Class : 1	Gases
Division : 2	

EU Classification

Zone : I, II	Gases / Vapors
--------------	----------------

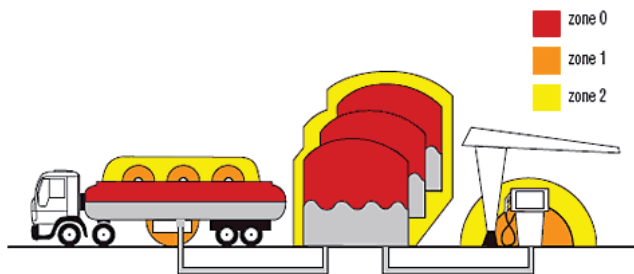
Ex mark : Ex d IIB T5; Ex t III C



NIXON provides a five year manufacturer's guarantee on all Nixon branded products.

- Electric Powered Industrial Equipment, used in areas containing explosive or flammable materials, must be designed to prevent any operation of the equipment from igniting the atmosphere. The design and construction of EX Lighting Equipments by NIXON permit their classification as Explosion Proof (EX) and enable their use in explosive and hazardous atmospheres.

(ATEX) ZONE DIAGRAM :



Heat Generation



HID/Sodium : 100 C
LED : 35 C

Light Source Life



HID/Sodium : 15.000 Hrs
LED : 50.000 Hrs

Mercury Safety



HID/Sodium : Contains
LED : -

Equal With



HID : 250 W
Sodium : 400 W

ATEX APPROVED

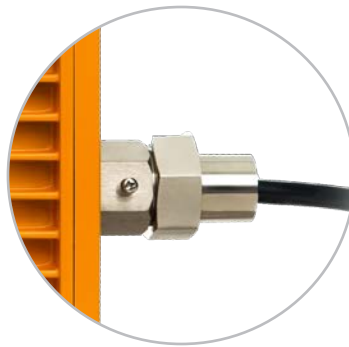
Certificate No:
NEMK012 ATEX 1254



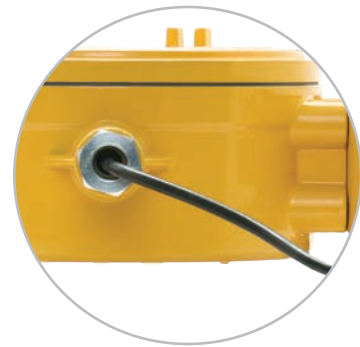
Applied to oil fields, oil refineries, offshore oil platform, power plants, gas stations, oil tanks, wharf, tunnel, pumping station, substation, the military base etc. Zone I and Zone II Hazardous Locations, Zone 20, Zone 21, Zone 22 and II A, II B, II C explosive gas atmosphere.



Bullet-proof Lens

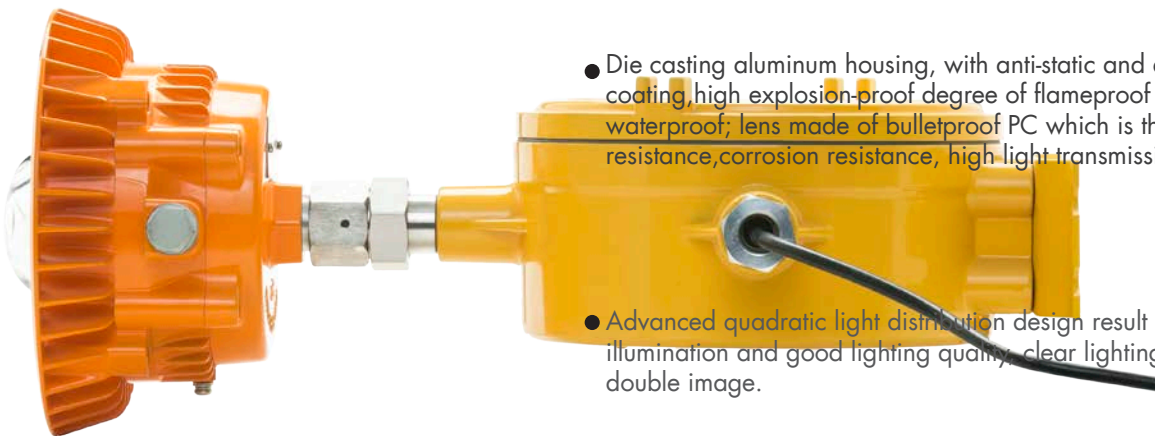


Fit for 1/2 NPT Glands

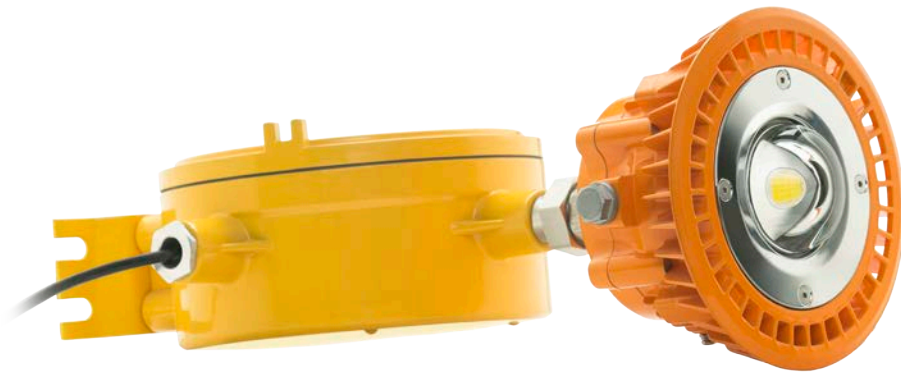


Applied with Hanging Bracket

- Patented design for heat dissipation to ensure life of light source up to 50,000 hours.
- Low power consumption while high light efficiency, power consumption just 20% as much as high pressure sodium lamp, mercury lamp at the same luminous condition, it saves energy more than 75% than that traditional light.

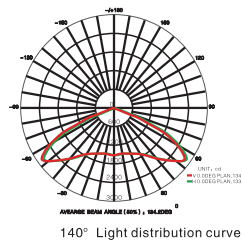
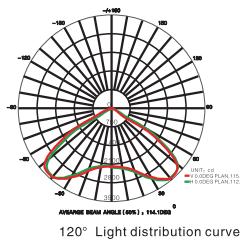
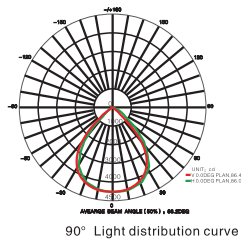
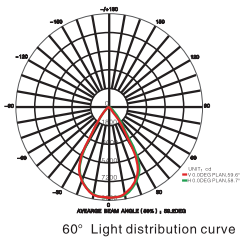


- Die casting aluminum housing, with anti-static and anti-corrosion coating, high explosion-proof degree of flameproof type; dust-proof, waterproof; lens made of bulletproof PC which is thermal resistance, corrosion resistance, high light transmission.
- Advanced quadratic light distribution design result in high uniformity of illumination and good lighting quality, clear lighting effect without a double image.
- Beautiful appearance, several types of installation methods available.



- Advanced Quadratic Light Distribution
Dust-Proof, Waterproof, Bulletproof Lens
- Die Casting Aluminium Housing
- Several Type Montage Equipments
- Anti-Static, Anti-Corrosion Coating

LIGHT DISTRIBUTION & ILLUMINANCE GRAPHICS :



HEIGHT (60° BEAM ANGLE)	Vertical illuminance (50/60/80/100/120W)	Irradiation range
8M	87/112/134/141/162Lx	Φ 10M
10M	56/72/86/92/104Lx	Φ 13M
12M	39/50/59/66/73Lx	Φ 16M
20M	14/18/21/23/26Lx	Φ 24M

The minimum lux at edge is 4 LX

HEIGHT (90° BEAM ANGLE)	Vertical illuminance (50/60/80/100/120W)	Irradiation range
8M	31/38/52/64/71Lx	Φ 20M
10M	20/24/34/41/46Lx	Φ 24M
12M	14/18/23/27/32Lx	Φ 24M
14M	10/13/17/21/23Lx	Φ 25M

The minimum lux at edge is 4 LX

HEIGHT (120° BEAM ANGLE)	Vertical illuminance (50/60/80/100/120W)	Irradiation range
6M	30/32/43/52/61Lx	Φ 18~20M
8M	15/17/24/30/35Lx	Φ 21~24M
10M	10/11/15/20/23Lx	Φ 24~28M
12M	7/8/11/13/16Lx	Φ 28~32M

The minimum lux at edge is 4 LX

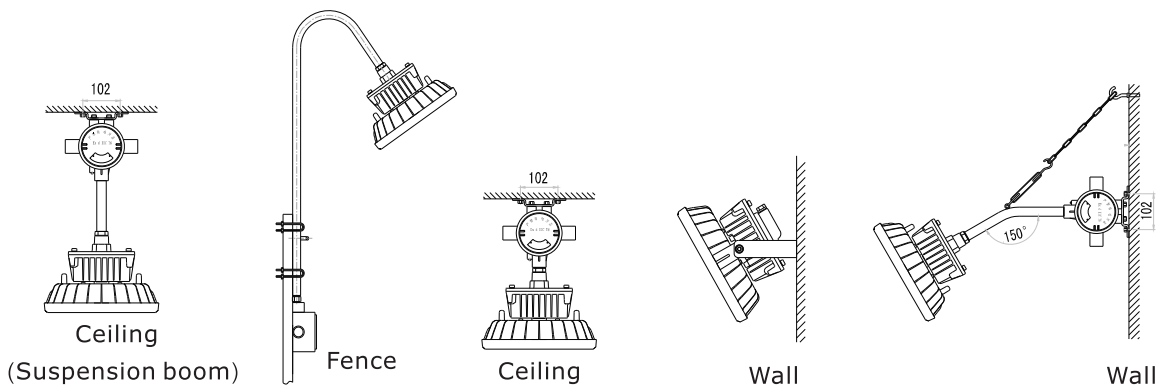
HEIGHT (140° BEAM ANGLE)	Vertical illuminance (50/60/80/100/120W)	Irradiation range
6M	20/23/31/38/44Lx	Φ 20~24M
8M	11/13/17/21/25Lx	Φ 24~28M
10M	7/8/11/13/16Lx	Φ 26~32M
12M	4/6/8/10/12Lx	Φ 30~36M

The minimum lux at edge is 4 LX

MONTAGE TYPES



i Go to nixonled.com for IES specific data and technical drawings.



	NIX-EX-EPEL01 20W	NIX-EX-EPEL01 25W	NIX-EX-EPEL01 30W	NIX-EX-EPEL01 40W	NIX-EX-EPEL01 50W
Power Consumption	30W	40W	50W		
Input Voltage	220V AC (applied for 90-305V)				
Frequency	50/60 Hz (applied for 47-63 Hz)				
Beam Angle	60°/90°/120°/140°/ 140° (Transversely) 70° (vertically)				
Explosion-proof Grade	Ex dIIB T5 Gb/Ext IIIC T95 °C Db				
Corrosion-proof Grade	WF2				
IP Grade	IP67				
Power Factor	>0.95				
Total Harmonic Current	<15%				
Lamp Efficiency(%)	≥90%				
Color Temperature(K)	Warm white:2700-4000K; Pure white: 5000-6500K				
Junction Temperature(Tj)	<65°C				
Color Rendering Index (CRI)	Ra > 70				
Light Effect	130 lm/W				
Ambient Environment	Temperature: -30°C—55°C; Humidity: 10-90%RH (25°C)				
Storage Temperature	-40°C-60°C				
Lifespan	>50000 Hours				
Material	Aluminum Alloy				
Installation Height	4~10m (flood light) / 10~30m (project light)				
Dimensions / Pkg. Size(mm)	300 × 300 × 226 / 380 × 380 × 320 mm				
Net Weight / packed Weight	6.3 Kg / 7,05 Kg				